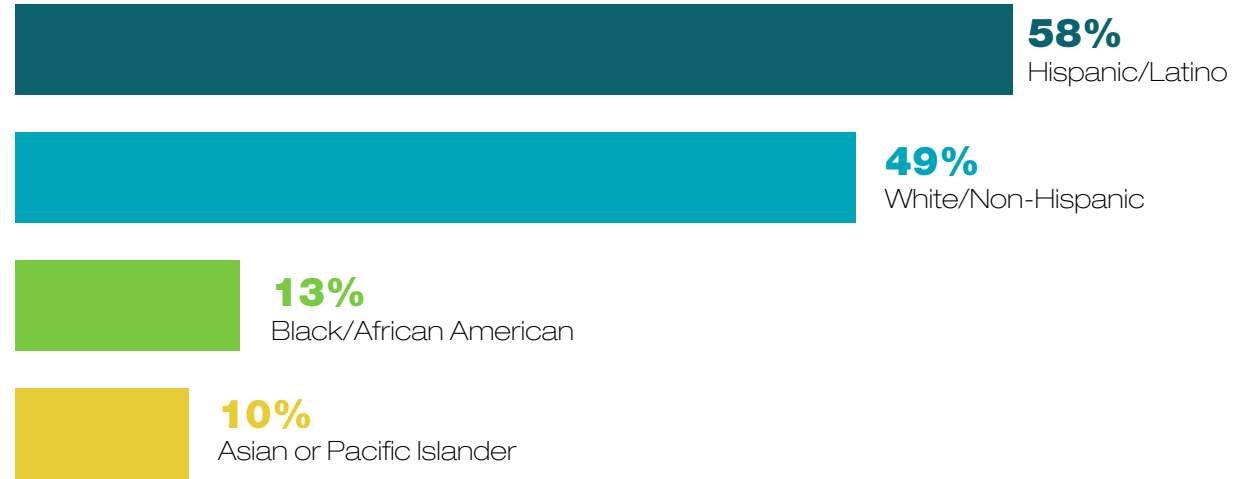


2014-15 Ethnicity Breakdown

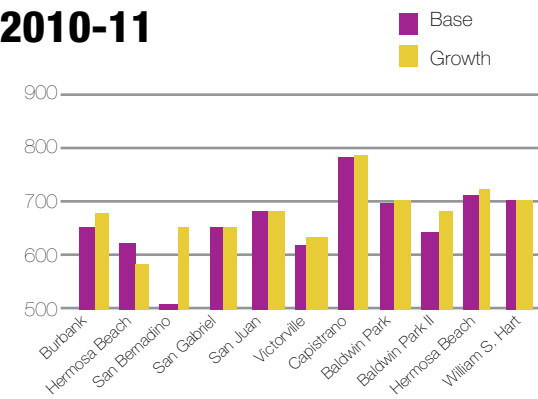
*Combined average across model – totals may exceed 100% as students can identify as multiple ethnicities



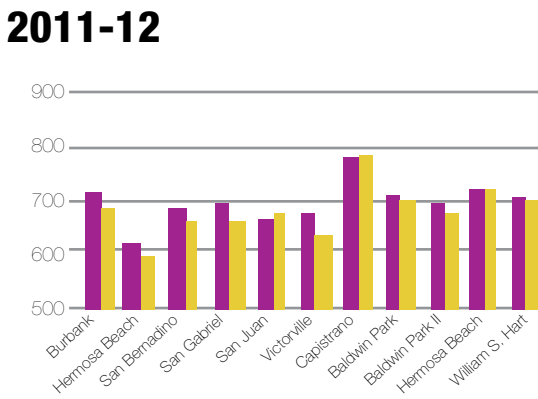
3-Year API Growth

*Growth data from model in California

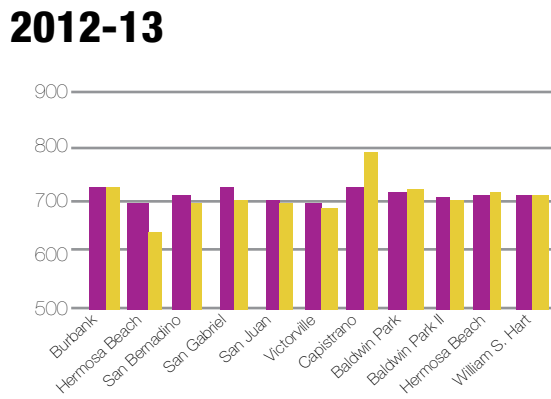
2010-11



2011-12

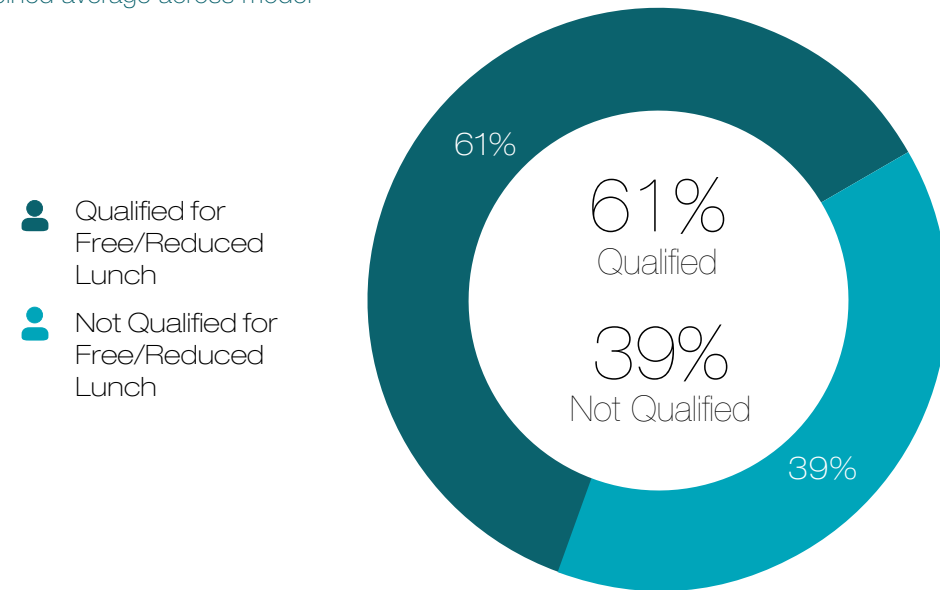


2012-13



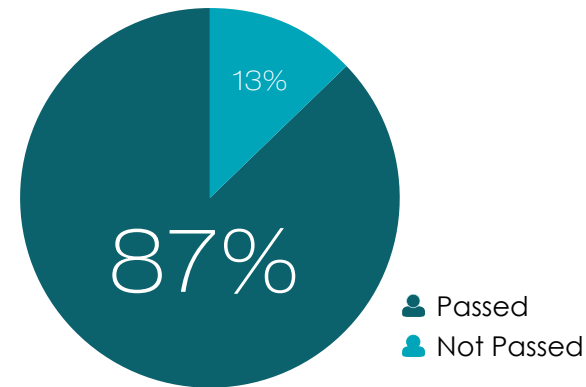
2014-15 Percentage of Free and Reduced Lunch

*Combined average across model



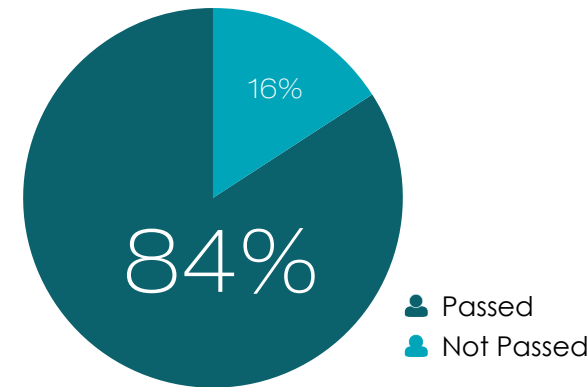
2014-15 CAHSEE Passage Rates

English Language Arts Passage Rate



*Combined average across model; cumulative testing data provided from internal source

Math Passage Rate



*Combined average across model; cumulative testing data provided from internal source

2014-15 Total Number of Students Served

44,427

*Aggregate total across model